

BOARD OF DIRECTORS

President

Dana Stubbendeck
Syngenta Seedcare

First Vice President

Jim Webster
Pioneer Hi-Bred
International

Second Vice President

Chuck Cornelius
Cornelius Seed
Company

Past President

Tom Tusha
Mycogen Seeds/
Dow AgroSciences

Secretary/Treasurer

Joan O'Brien
Iowa Seed
Association

Directors

Jim Anderson
Remington Seeds, LLC

Jeremiah Andorf
Bayer CropScience

Chris Latham
Latham Hi-Tech Seeds

Dr. Manjit Misra
ISU Seed Science

Tom Powers
Asgrow/Dekalb

Randy Ramundt
Channel/Monsanto

Jim Rouse
Iowa Crop Improvement
Association

Tom Severson
Agvantage FS

Join us in June For the 2017 ISA Golf Tournament

Our annual golf tournament is right around the corner! The format is a four-person "best ball" which usually means low scores and a lot of fun. You can register as an individual and we will place you in a foursome, or you can make your own foursome and register as a team.

The tournament registration fee is \$90 per player. Registrations must be received by Wednesday, June 21, 2017. No refunds will be given after this date. Sponsorship opportunities are available. Please contact the office for details. Download registration form [here](#).

Details Of The Day

Location:

Beaver Creek Golf Course
11200 NW Towner Dr, Grimes, IA 50111

10:30 AM

Golfer check-in

11:00 AM

Lunch

12:00 PM

Shotgun Start

Awards ceremony and light snacks will follow immediately after the completion of golf.

Iowa Seed Corn Cover Crops Funds Available

The Iowa Seed Corn Cover Crops Initiative is a 3-year project which started in 2016 and was developed by the Iowa Seed Association in conjunction with the Agribusiness Association of Iowa, Iowa Farm Bureau Federation, Iowa Corn, and the Soil and Water Conservation Society. An initial \$1.1M grant from the Iowa Department of Agriculture & Land Stewardship (IDALS) under their Clean Water Initiative program provided funding for the project to begin in 2016, and following a successful first year of the project IDALS has awarded the project an additional \$500,000 in cost-share funding for producers.

In 2016 alone, this project made available over \$500,000 in cost-share to over 170 seed corn growers from 9 seed companies for planting cover crops and we're interested in making this opportunity available to your seed corn growers again in 2017 and beyond. Thanks to the engagement of seed companies and their growers, over 36,000 acres of cover crops were planted on fields following seed corn

harvest in 2016, which is estimated to be around 15-20% of the seed corn acreage in Iowa.

The Iowa Seed Corn Cover Crops Initiative focuses on ways to help increase adoption of cover crops specifically within the seed corn production system in Iowa. The focus on seed corn is driven by the unique opportunity that seed corn provides due to the earlier harvest, thereby providing better timing opportunities for establishing cover crops in the late summer and fall after harvest. This focus is also heavily driven by the seed corn industry in Iowa, and their efforts to help promote and support the use of cover crops as part of Iowa's Nutrient Strategy.

The project is led by the Iowa Seed Association and offers cost-share (\$15/ac) and educational opportunities for seed corn growers interested in using cover crops on seed corn acres. For more information, contact project coordinator [Shannon Moeller](#) at or 641-861-2280.



Don't Miss the Premier Policy Meeting of the Seed Industry!

The 134th Annual Convention convenes all sectors of the seed industry for four days of essential policy discussion, educational breakouts, professional development and networking. This year, we will make the most of our Minneapolis destination, including visits to nearby ASTA member company businesses and an opening general session featuring a panel discussion among today's major food companies.

Don't miss this opportunity to participate in the U.S. seed industry's premier policy meeting which brings together leaders and experts to discuss issues affecting the industry and determine the association's priorities for the upcoming year.

This year's meeting is specifically scheduled to allow people to make participation at whatever level their schedule allows - whether it's making a quick trip in and out to participate in policy sessions only, or staying for the full duration of the meeting to network, go on educational tours and attend the conference banquet.

Click [here](#) for more information, and register today!

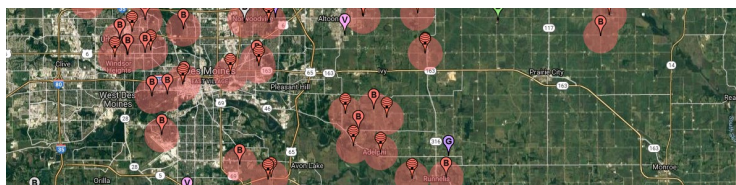


Online Tool Assists Specialty Crop Growers and Applicators

DriftWatch, a new online mapping tool for sensitive crops, allows herbicide or insecticide applicators to see where bees and specialty crops are being raised in their neighborhood.

The new registry offers two online platforms that provide state of the art mapping features. DriftWatch® is a registry site for use by producers of commercial crops sensitive to pesticides and includes the online capacity to map boundaries around production fields.

BeeCheck® is a registry site for beekeepers that designates one-mile radius boundaries around apiaries. Sensitive crop producers with apiaries may enter hive locations using either the DriftWatch® or BeeCheck® registries. Along with apiary sites,



half an acre or larger commercial vineyards, orchards, fruit and vegetable grow sites, nursery and Christmas tree production sites, and certified organic crops are included in the registry.

To register for this voluntary communications tool, discover helpful [recourses](#), [order signs](#), or map a sensitive crop site visit [FieldWatch](#).

Applicator Registration

[Click here to sign up if you are a licensed applicator.](#)

Map My Specialty Crops

[Click here to sign up as a commercial crop producer.](#)

Questions regarding the registries can be directed to IDALS State Horticulturist, Paul Ovrom, at paul.ovrom@iowaagriculture.gov or 515-242-6239.

Or [contact](#) FieldWatch directly.

Big Data Is Transforming How Scientists Create Better Seeds

This summer, in cornfields in Iowa and Nebraska, about a thousand small point-and-shoot digital cameras will be enclosed in waterproof cases, mounted on poles and attached to solar-powered battery chargers. They will take pictures every ten minutes as plants grow; all part of a plan to create better seeds.

"We watch plants go through their normal growth and development and also we watch them respond to environmental stressors, like drought and so forth," says Pat Schnable, director of the Plant Sciences Institute at Iowa State University.

The institute still has greenhouses and traditional wet labs, but the time-honored tradition of crossbreeding plants again and again to get the best traits is no longer the primary way the

science is done. Now, scientists are harnessing the power of Big Data in an effort to make the process more focused and faster. That means plant breeders can potentially bring more different new seeds, maximized for different environments, to market faster. More productive seeds ultimately lead to more food for the world's growing population.

Once scientists sequenced the human genome about 20 years ago, plant breeders adapted that breakthrough to mapping plant genetics.

Source:

The above story is based on materials obtained from FlatlandKC.org news article. Note: Materials may be edited for content and length.

Stine Seed Company Signs Up As Licensee For Balance GT System

The Stine Seed Company, Adel, Iowa, has signed on as a licensee in preparation to offer the Balance GT Soybean Performance System once all necessary regulatory approvals are completed.

In a news release, Stine officials say the Balance GT Soybean Performance System will benefit soybean growers by providing high-yielding, elite genetics coupled with a double herbicide-tolerant trait stack, protecting against a wide range of broadleaf weeds and grasses.

"We recognize the need for an additional soybean seed-herbicide trait platform to meet our customers' needs," says Myron Stine, president of Stine Seed Company. "Balance GT truly represents a unique solution that we believe will add value to our customers' operations, and we are excited to be partnering with MS Technologies and Bayer to deliver this new technology to

soybean growers."

As a licensee for the Balance GT Soybean Performance System, Stine officials say the company will be able to deliver their customers a platform that will offer not only yield improvements but also simple and effective weed management along with long-lasting, residual control.

Balance GT marks the second collaboration for MS Technologies and Bayer, which brought growers the LibertyLink system in 2009. Balance GT will be broadly licensed throughout North America and will provide a strong alternative to current weed management options, say company officials.

Source:

The above story is based on materials obtained from Agriculture.com news article. Note: Materials may be edited for content and length.

IN THE NEWS: Updates on Palmer Amaranth from the Industry

[How Meaghan Anderson Helped Iowa's Farmers Deal With Palmer](#) A central Iowa chemical company sales representative emailed a photo of a weed that resembled Palmer amaranth Agriculture.com

[State, NRCS update controls for Palmer amaranth](#) While native seed mixes contaminated with Palmer amaranth seed used in Conservation Reserve Program (CRP) fields ... IowaFarmerToday.com

[USDA approves herbicide options to control aggressive weed on CRP land](#) USDA recently gave farmers more flexibility for controlling Palmer amaranth on Conservation Reserve program acres...WallacesFarmer.com

[Noxious Amaranth](#) HF 410 makes Palmer amaranth a primary noxious weed and a prohibited invasive plant ...WallacesFarmer.com

[ASTA hosts meeting on Palmer amaranth, other weed issues](#) The American Seed Trade Association on May 9 hosted a meeting of grower groups, seed companies and state government officials to discuss a collaborative approach to addressing Palmer amaranth ... AgWeek.com

THANK YOU TO OUR SPONSORS!!

Platinum Sponsors

MONSANTO



Dow AgroSciences



Science For A Better Life



Silver Sponsors

- Remington Seeds
- EES Companies
- Popp Engineering
- Chantland - MHS Company
- Bratney Companies
- Peterson Genetics, Inc.

Iowa Seed Association Reminders & Events

- May - August
 - June 28
 - December 4-7
 - February 14, 2018
- ISU Seed Workshops - [Download ISU brochure here](#)
Annual ISA Golf Tournament, Beaver Creek Golf Club, Grimes, IA
ASTA—CSS 2017 Seed Expo, Chicago, IL
ISA Annual Meeting & Seed Forum, Des Moines, IA

900 Des Moines Street Des Moines, Iowa 50309
Phone: 515-262-8323 or 800-383-1682 Fax: 515-262-8960
www.iowaseed.org